

INSTALLATION INSTRUCTIONS

DESCRIPTION: Front A-Arm Guard Kit

PART NUMBER: B4J-F31A0-V0

MODEL: 2021+ Wolverine RMax2 and RMax4



⚠ WARNING

Please read and understand these instructions completely before installation to avoid possible injury, or damage to the accessory or vehicle.

NOTICE:

Installation of this kit requires a torque wrench and should be performed by an authorized Yamaha dealer or a qualified mechanic.

WARRANTY INFORMATION:

In the United States, see your Yamaha dealer for a copy of the Yamaha Genuine Parts and Accessories Limited Warranty.

DEALER OR INSTALLER:

These instructions contain important information for future reference and *must* be given to the customer.

PARTS LIST:

No.	Part Number	Description	Qty
--	B4J-F31A0-V0	Front A-Arm Guard Kit	--
①	-	Right Side Skid Plate	1
②	-	Left Side Skid Plate	1
③	95812-06870	M6x16mm Hex Head Flange Bolt	2
④	95812-06035	M6x35mm Hex Head Flange Bolt	4
⑤	92902-06200	M6 Washer	6

* Part supplied with kit only and not available separately.

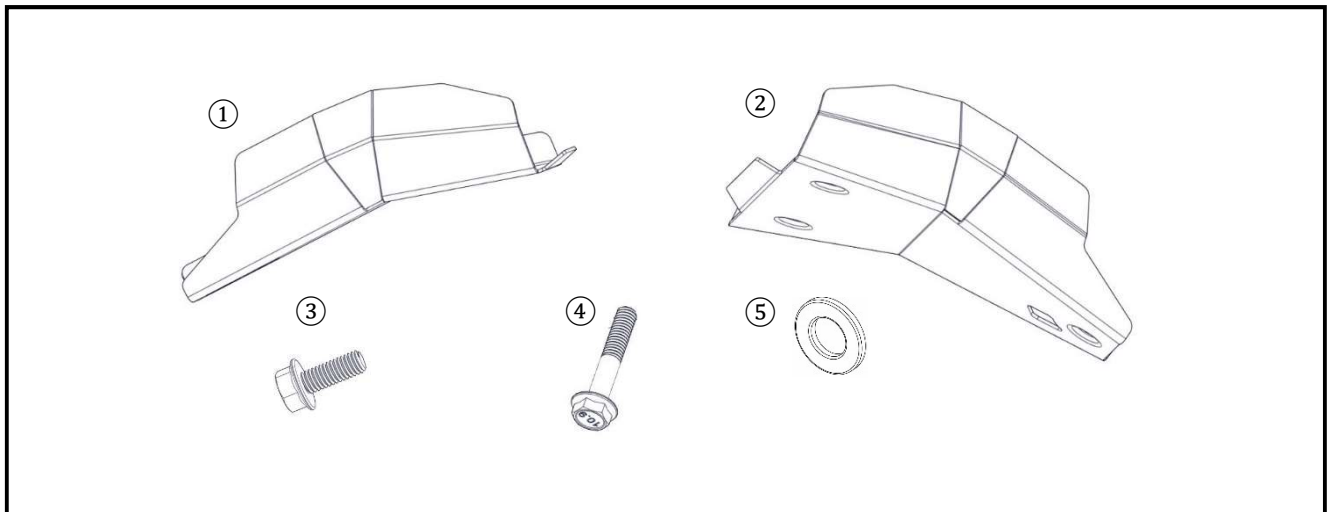


Fig. 1

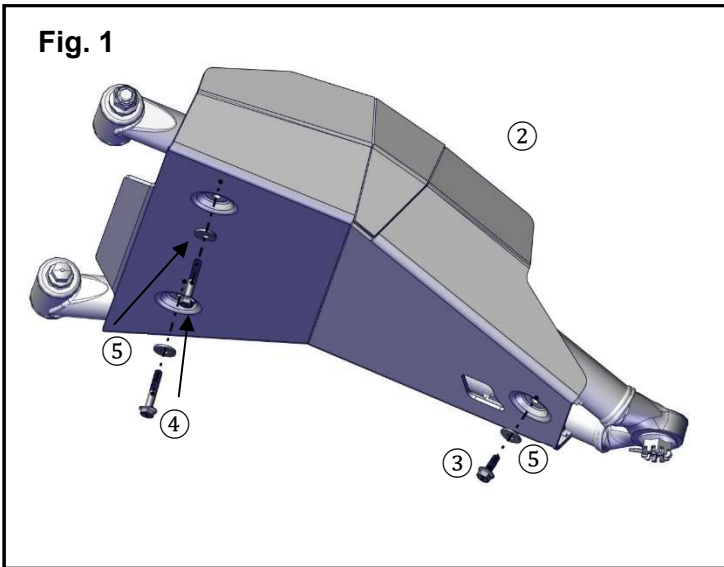
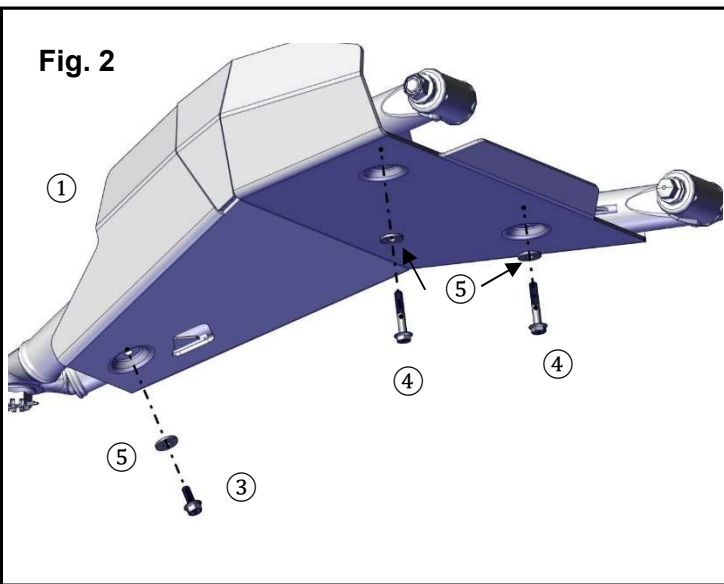


Fig. 2



PREPARATION:

- Place the vehicle on a secure and level surface.
- Set the parking brake.
- Clean the mount surfaces before beginning installation.

INSTALLATION:

1. Fit the (2) Left Side Skid Plate to the A-Arm. (Fig. 1)
2. On the outboard side, install a (5) M6 Washer on to (3) M6x16mm Hex Flange Bolt. Thread the bolt into the weld nut on the back side of the A-arm. (Fig. 1)
3. Install two (5) M6 Washers onto two (4) M6x35mm Hex Head Flange Bolts and thread them through the (2) Left Side Skid Plate and into the threads of the weld nuts on the A-arm reinforcement plate. See the left side of (Fig. 1)
4. Torque all three bolts to 8.5 Nm (0.85 kg-m or 6.0 lb-ft).
5. Repeat the process on the right side with (1) Right Side Skid Plate. (Fig. 2)

MAINTENANCE:

Periodically, check torque on all hardware. If loose hardware is found, re-torque to specification.

CARE AND CLEANING:

Clean painted metal parts with a clean soft cloth and mild soap and water solution. Rinse and dry.

CUSTOMER SERVICE:

For further information see your Yamaha dealer.

ESTIMATED TIME TO INSTALL: 0.5 HRS.